

STRING PROJECT

magic

1,35 mm
mono

temp 25°C - relative humidity 65%



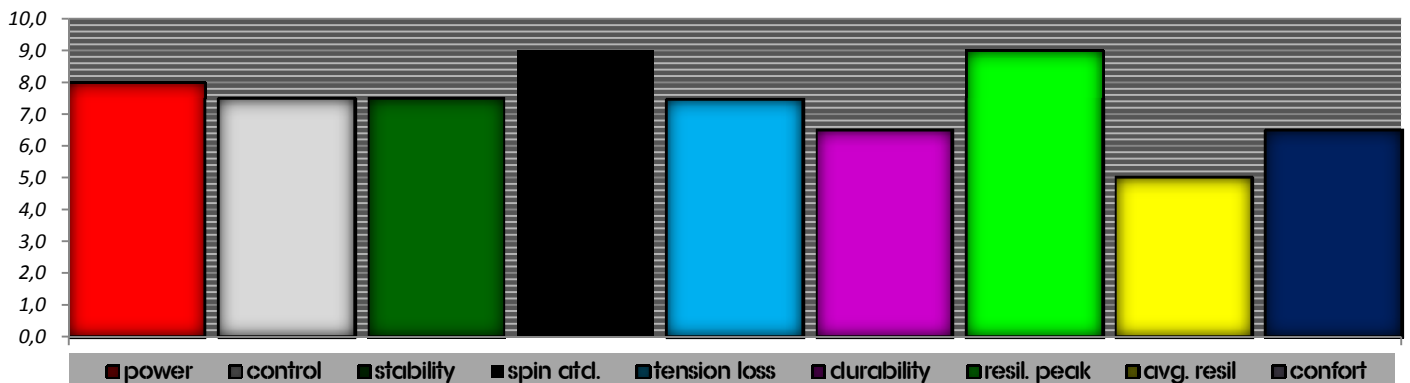
| | | | | | |
|--|--------|--------|---------------------------------|---------|--------------------|
| POWER LEVEL | 675pnt | 8,0/10 | power attitude | | |
| CONTROL LEVEL | 960pnt | 7,5/10 | control attitude | 7,0/10 | stiffness |
| STABILITY LEVEL | 745pnt | 7,0/10 | stability attitude-consistency | | |
| SPIN POTENTIAL | 1,0 | 9,0/10 | | | |
| MAX RESILIENCE RANGE | 18kg | 22kg | maximum resilience range | | |
| RECOMMENDED TENSION | 21kg | 25kg | | | |
| TENSION LOSS INDEX 300 | 19% | 7,5/10 | tension loss after 300" - 5mins | | |
| PLAYING LIFE (tension-resilience) | 181% | 6,5/10 | dyn str life | 8 - hrs | 10 - hrs (approx.) |

| | | | | |
|--------------------------------------|---------|---------|-------------------|---------------|
| RESILIENCE PEAK | 85kgmm | 9,0/10 | reactivity level: | high ++ |
| AVERAGE RESILIENCE | 140kgmm | 5,0/10 | vs gut | 4-cycles |
| STRING PLANE STIFFNESS 22,5kg | | 4,5/10 | new | ⇒ 10+/10 used |
| STRING PLANE STIFFNESS 27,5kg | | 10,0/10 | new | ⇒ 10+/10 used |

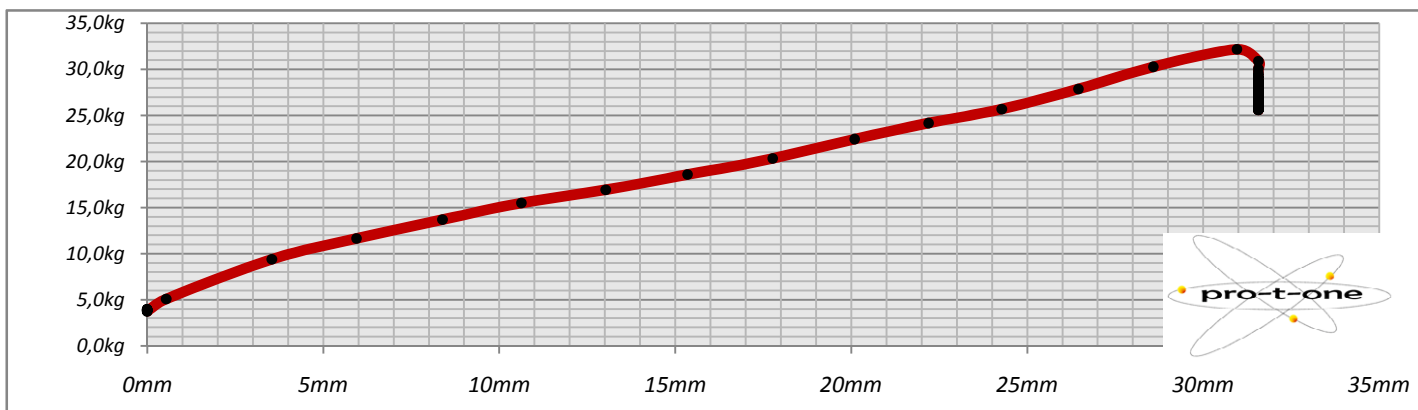
| | | | | |
|-----------------------------------|-----|---------------|-------|----|
| PRESTRECH | NO | recommended % | --- | 5% |
| PROGRESSIVE PLASTICIZATION | YES | def. plast. | 2,7mm | 5% |

| | | kg/mm | | | kg/mm | |
|------------------------------------|--------------|-------|-------|------|-------|-----------|
| STATIC STIFFNESS 10-15kg | medium-tough | 0,95 | new | 163% | ⇒ | 1,55 used |
| STATIC STIFFNESS 15-20kg | medium | 0,70 | new | 214% | ⇒ | 1,50 used |
| STATIC STIFFNESS 20-25kg | medium-tough | 0,80 | new | 181% | ⇒ | 1,45 used |
| STATIC STIFFNESS 25-30kg | medium-tough | 0,90 | new | 172% | ⇒ | 1,55 used |
| STATIC STIFFNESS 30-35kg | tough | 1,00 | new | 130% | ⇒ | 1,30 used |
| AVG. STATIC STIFFNESS 15-30 | medium | 0,80 | kg/mm | | | |

| | | g/mm | |
|----------------------------------|--------|------------|---------------------------------------|
| DYNAMIC STIFFNESS | 232 | ±2 g/mm | sample time 20ms |
| | high | 9,0/10 | reference tension 20kg |
| STRING STIFFNESS EMULATOR | 241 | ±2 lb/inch | string length 325mm - deflection 10mm |
| ARM PROT - CONFORT LEVEL | 6,5/10 | medium | 5,8/10 8,4/10 |

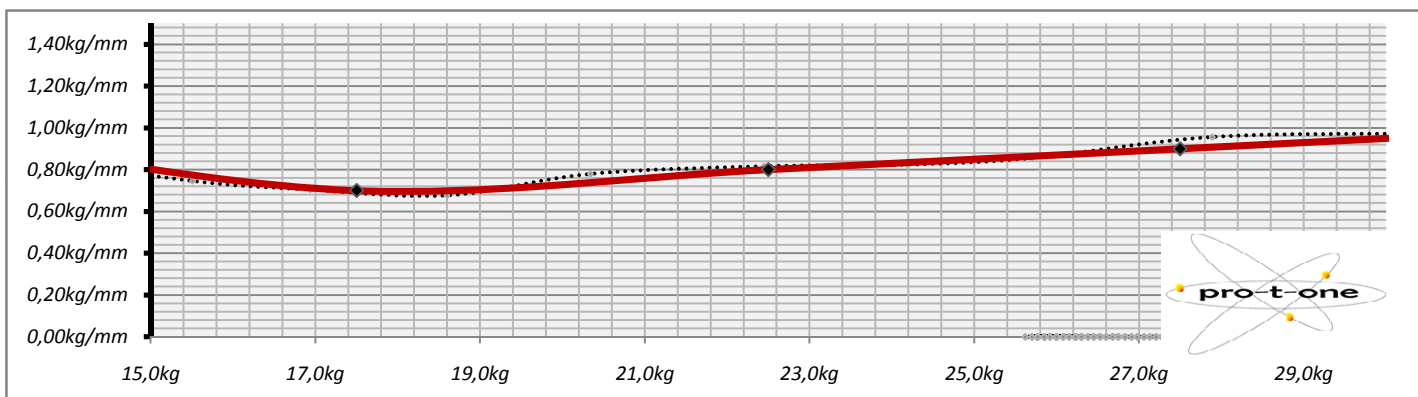


DEFORMATION - LOAD DIAGRAM

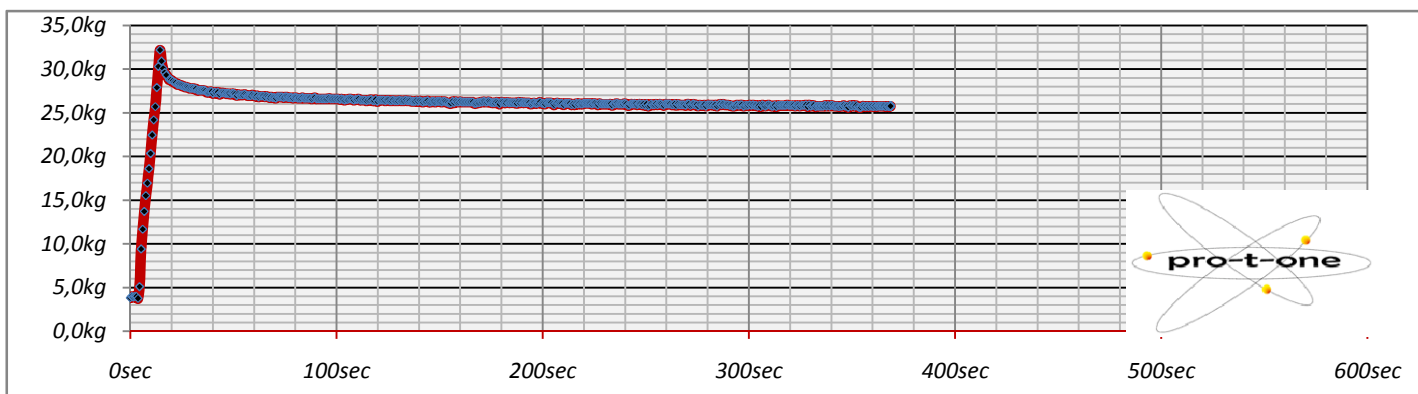


| | | | |
|---------------------------------|-------------------|-----------------------------------|-------------------|
| STRING PROJECT | 1,35 mm | temp 25°C - relative humidity 65% | |
| magic mono | | sample time | 700-800ms |
| | | starting length | 300mm |
| static stiffness 10-15kg | 0,95 kg/mm | static stiffness 20-25kg | 0,80 kg/mm |
| static stiffness 15-20kg | 0,70 kg/mm | static stiffness 25-30kg | 0,90 kg/mm |

STRING STATIC STIFFNESS MODULUS



TENSION LOSS DIAGRAM



HYSTERESIS DIAGRAM - LOAD AND UNLOAD CYCLES

