

# STRING PROJECT

1,25 mm

temp 25°C - relative humidity 65%



armour

mono

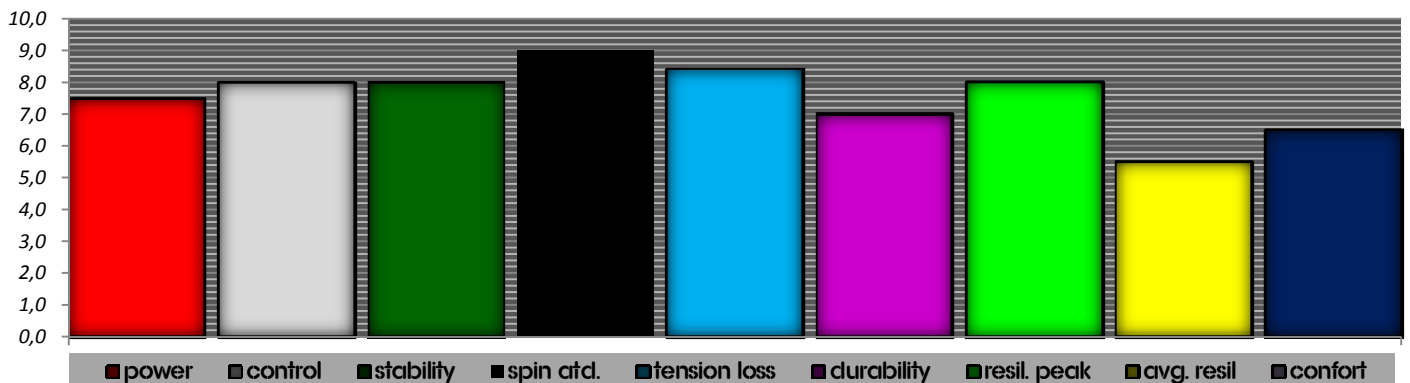
<b>POWER LEVEL</b>	610pnt	7,5/10	power attitude	
<b>CONTROL LEVEL</b>	1060pnt	8,0/10	control attitude	8,5/10   stiffness
<b>STABILITY LEVEL</b>	756pnt	8,0/10	stability attitude-consistency	
<b>SPIN POTENTIAL</b>	1,5	9,0/10		
<b>MAX RESILIENCE RANGE</b>	13kg	17kg	maximum resilience range	
<b>RECOMMENDED TENSION</b>	18kg	22kg		
<b>TENSION LOSS INDEX 300</b>	17%	8,5/10	tension loss after 300" - 5mins	
<b>PLAYING LIFE (tension-resilience)</b>	167%	7,0/10	dyn str life	8 - hrs   12 - hrs (approx.)

<b>RESILIENCE PEAK</b>	75kgmm	8,0/10	reactivity level:	high
<b>AVERAGE RESILIENCE</b>	160kgmm	5,5/10	vs gut	3-cycles
<b>STRING PLANE STIFFNESS 22,5kg</b>		5,5/10	new	⇒ 10+/10 used
<b>STRING PLANE STIFFNESS 27,5kg</b>		8,5/10	new	⇒ 10+/10 used

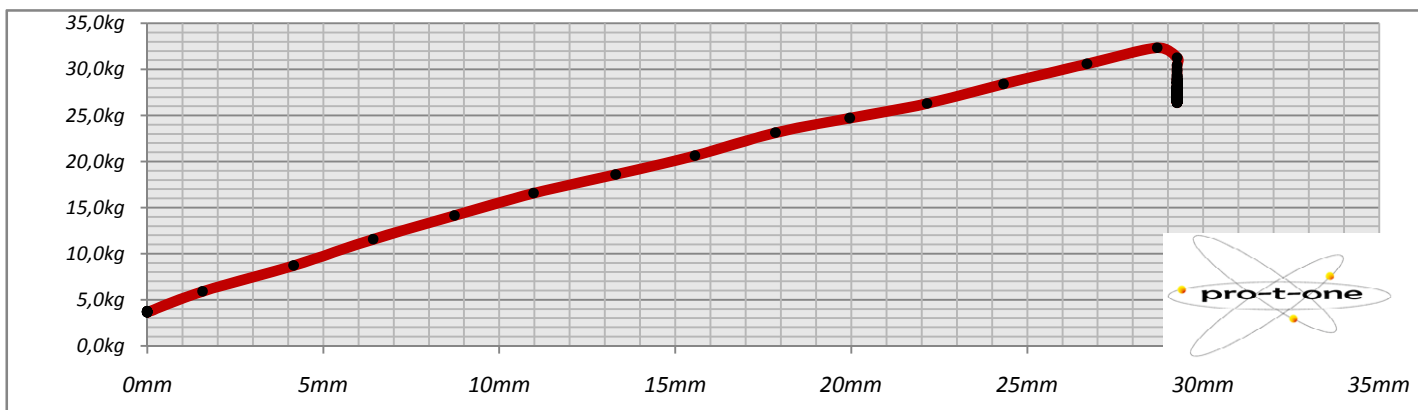
<b>PRESTRECH</b>	NO	recommended %	---	5%
<b>PROGRESSIVE PLASTICIZATION</b>	NO	def. plast.	1,1mm	5%

	kg/mm		kg/mm				
<b>STATIC STIFFNESS 10-15kg</b>	tough	1,15	new	135%	⇒	1,55	used
<b>STATIC STIFFNESS 15-20kg</b>	medium-tough	0,95	new	158%	⇒	1,50	used
<b>STATIC STIFFNESS 20-25kg</b>	medium-tough	0,90	new	167%	⇒	1,50	used
<b>STATIC STIFFNESS 25-30kg</b>	medium-tough	0,80	new	181%	⇒	1,45	used
<b>STATIC STIFFNESS 30-35kg</b>	medium-tough	0,95	new	147%	⇒	1,40	used
<b>AVG. STATIC STIFFNESS 15-30</b>	med-tough	0,88	kg/mm				

	g/mm				
<b>DYNAMIC STIFFNESS</b>	230	±2 g/mm	sample time 20ms		
	high	9,0/10	reference tension 20kg		
<b>STRING STIFFNESS EMULATOR</b>	239	±2 lb/inch	string length 325mm - deflection 10mm		
<b>ARM PROT - CONFORT LEVEL</b>	6,5/10	medium	5,8/10	7,8/10	

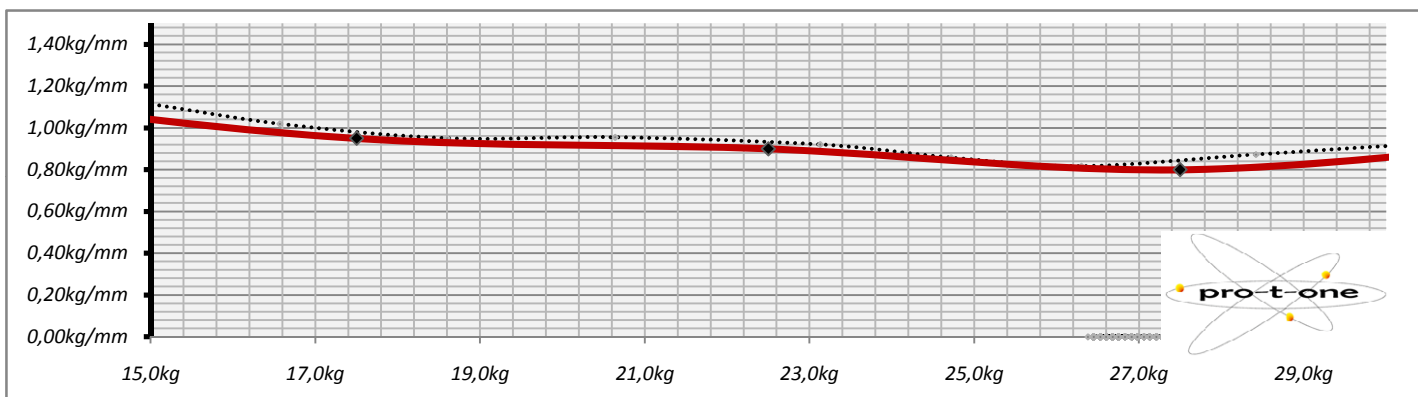


## DEFORMATION - LOAD DIAGRAM

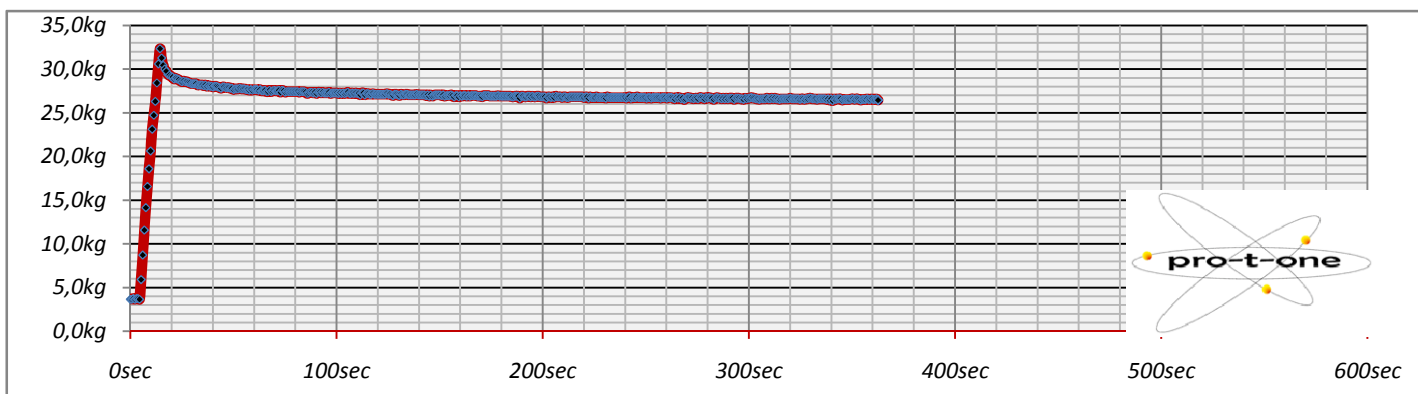


<b>STRING PROJECT</b>	<b>1,25 mm</b>	temp 25°C - relative humidity 65%	
<b>armour</b>		<b>sample time</b>	<b>700-800ms</b>
<b>mono</b>		<b>starting length</b>	<b>300mm</b>
<b>static stiffness 10-15kg</b>	<b>1,15 kg/mm</b>	<b>static stiffness 20-25kg</b>	<b>0,90 kg/mm</b>
<b>static stiffness 15-20kg</b>	<b>0,95 kg/mm</b>	<b>static stiffness 25-30kg</b>	<b>0,80 kg/mm</b>

## STRING STATIC STIFFNESS MODULUS



## TENSION LOSS DIAGRAM



## HYSTERESIS DIAGRAM - LOAD AND UNLOAD CYCLES

